

# ***O (die shOw)***

## Technical Rider

### **General Information**

Format: Visual performance for Deaf\* and hearing audiences

Age: 6+

Duration: 50'

Language: DGS & German

The age-Open performance O takes everyone aged 6 and over into the imaginative world of letters, words and their meanings. Starting from the form O, Jan Kress, Julia Keren Turbahn and Jan Rozman together with the audience test the limits of our communication and show in a playful way how flexible our language can be.

Concept, Choreography, Performance: Jan Kress, Julia Keren Turbahn, Jan Rozman

Stage Design: Dan Pikalo, Jan Rozman

Lighting Design: Annegret Schalke

Costume Design: Tanja Padan / Kiss The Future

Sound Design: Tim Schwerdter

Additional Vocals: Erik Leuthäuser

Illustration, Graphic Design: Matija Medved

Outside Eye: Eyk Kauly, Rachell BO Clark

Theater Educational Accompanying Poster: Charlotte Bartsch, Julia Keren Turbahn

Production Management: Alexander Schröder, Julia Keren Turbahn

Internship: Lynn Dambacher

*A production by Julia Keren Turbahn in co-production with FELD Central for Young Performance. Funded by the Senate Department for Culture and Social Cohesion of the State of Berlin as part of the IMPACT funding. With support from SKICA Berlin, Slovenian Cultural Center Berlin.*

*Special thanks to Caterina Macht, Neely de Jong, Cora Tischmann, Ziv Frenkel, Rachell BO Clark, Eyk Kauly, Johanna Benz, Ana Malalan and the entire FELD team, as well as to the 3rd grade of the Ernst Adolf Eschke School and the Robben class at Rosa Parks Elementary School.*

**Please notify the company at the earliest opportunity if any of the requirements in this document cannot be met.**

## **Touring personnel**

The company tours with 3 performers (1 F, 2 M) and 3 technicians (1 sound engineer, 1 light technician, 1 set technician). For communication a communication assistance needs to travel with the group. (For more information about this please check the access rider provided by the company). All together, 7 people need to travel.

## **Setup and Dismantling**

The get-in depends on the set up of the theatre. The setting up of the stage / scenography can take 2 - 3 hours with the help from in-house technicians. If there is enough space (ca. 15m<sup>2</sup>) in the backstage, warehouse, or similar space the stage and light setup can happen in parallel. The light and sound set up takes 5 hours, making the total get-in time between 6 and 8 hours. Additionally, there must be a rehearsal before the performance. The dismantling takes 1 - 2 hours.

Lights and sound are operated by the touring personnel. Both operating positions must have a clear view of the stage. The venue will need to provide a minimum of 1 skilled technician for the set up and dismantling, 1 specialized in sound, and 1 in lighting.

## **Stage**

- A black box stage is required
- A full black out is required
- The performance requires raked seating
- The height should be at least 3,5 m
- Enough space on the grid for hanging the LED ring
- Minimum stage size of performing surface is 8,5 m (width) x 6 m (depth)
- Additional min. 2,5 m width of space on the left side of stage (or backstage) for storage of props
- Black dance floor
- Side wings to cover the exits

The staging items we bring with us:

- 9 big boxes, 6 smaller boxes (props)
- LED ring

**Please see Appendix 1 – Stage**

## Lighting

- minimum 11 x LED fixtures RGBW. The model & necessary opening angles depend on the venue, in particular the height of rig and size of stage:
  - Ch 50 – 53 and 55-58 are supposed to create a wash of the stage.
  - The three LEDs Ch 60-62 need to be more narrow in opening angle to not overlap when lighting the three „white cube towers” next to each other in different colors (compare picture 1)
  - ideal fixtures: e.g. Robe Perfect 150 RGBW. They are zoomable 4°-60°
  - Additional 4-6 LED fixtures as side lights (Ch 61-66) are helpful if available.
- Minimum 4 x profiles creating top-down circles of diameter 160-180cm. Maximum brightness is desired, so minimum native opening angle for the rig height is good.
- 4 irises for those profiles are needed.
- 3 x profiles 50°
- 7 x Fresnel 1kW
- 4 x flood light asymmetrical with barn door 1kW

### Audience light

It should evenly light the audience without blinding them. Audience needs to be able to draw onto paper during the performance. Audience faces should be recognizable for the performers when the audience light is turned on. Exact fixtures can be discussed, preferably using floods as top lights and Fresnels from the sides.

### Gels

Special gels violet, blue, orange, pink are provided by the company.  
Please let us know if you can provide L201 (and frost R119 or similar).

### Special light LED ring

We use a 5m RGB neonflex attached to a ca. 160cm diameter ring provided by us with the help of velcro and 4 cable ties. The ring is hanging diagonally over the stage on 3 mobile hanging points with pullies. (see *Picture 1*)

The LED dimmer is placed on the stage floor close to the side of the stage or should be hung up in the rig (maximum cable length is 10m).

The ring will be removed from its hanging position and put down on the ground towards the end of the show by the stage designer.

Rigging material required from the theatre:

- 7 3-4 pullies
- black thread

**An example lighting plot is attached (Appendix 2 – Light Plan)**

## Video

Bright video projector, preferably LCD (for good black value in blackouts) or with dmx shutter. Position and optics to be decided according to the 180cm x 180cm projection surface on 3 x 3 boxes. We project white text on black surface. The company provides a MacComputer with HDMI output and Isadora Software for video mapping onto the surface.

## Fog

We use two fog machines, preferably dmx controlled. Please let us know what is available in the venue. One very small fog machine is also in the possession of the production and can be used in small spaces.

## Sound

- 2x Stereo inputs at FoH (alternatively can be adapted to 1)
- PA: 2x Tops + strong Bass speaker (ideally movable to create vibrations for deaf audience)
- 1x Monitor Speaker for performers (leveled via bus/aux from FoH)
- 3x Power outlets at the FoH
- It's important to have an unobstructed view from FoH to the stage (we are using a visual metronome)

## Dressing Rooms

Please provide:

- A dressing room for the performers. These should be non-smoking and private.
- Showers with hot water.
- If providing meals, please note a number of company members are vegetarian.

## Timetable, Transport and Contact

Set up takes between 6 and 8 hours, depending on the venue. A rehearsal in the space is required. Dismantling takes 1 - 2 hours. The set design can travel with a van. Alternatively, cargo delivery can be used.

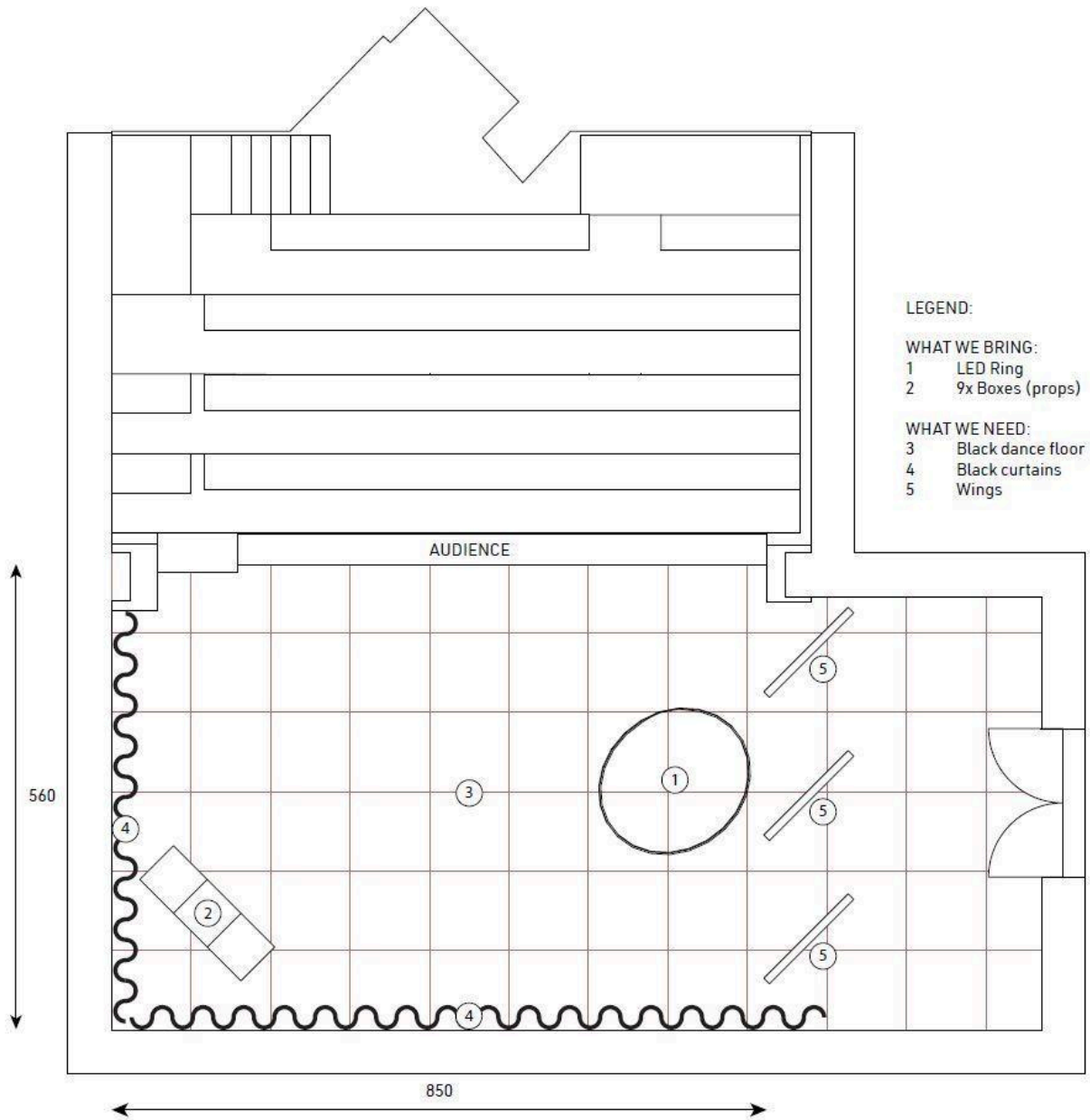
For any information about technical details please contact:

Jan Rozman

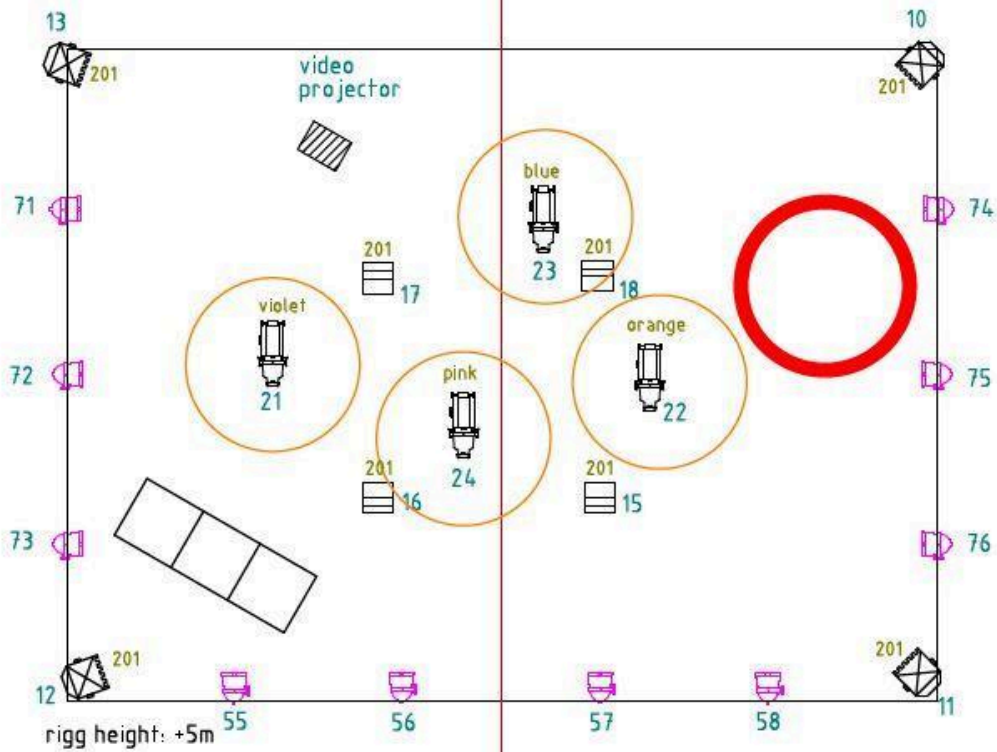
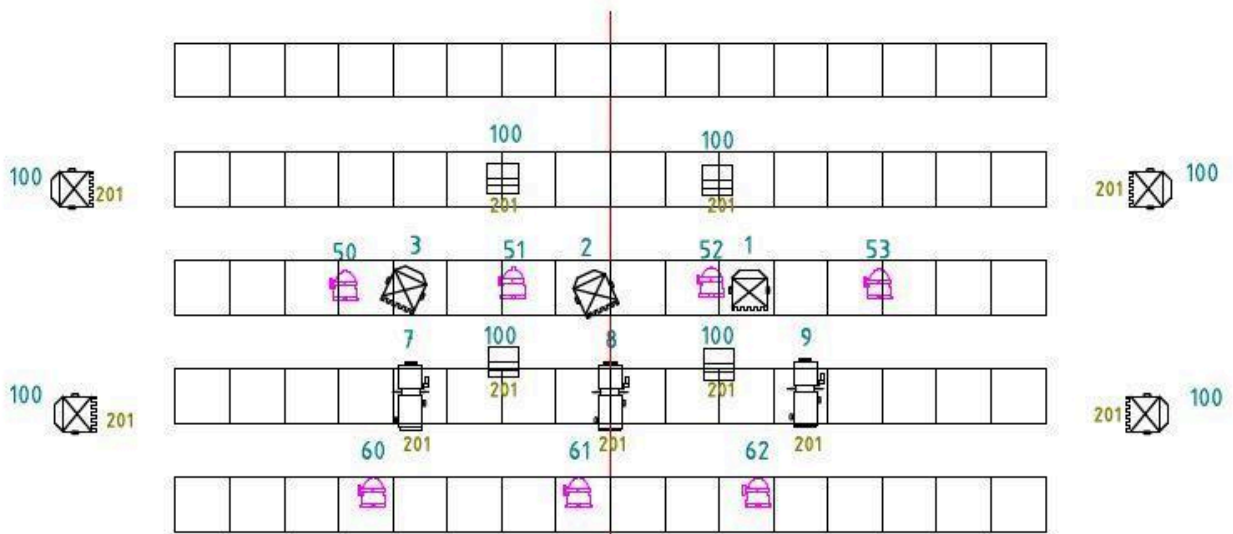
[jan.rozman1@gmail.com](mailto:jan.rozman1@gmail.com)

+386 40 239 404

## Appendix 1 - Stage



# Appendix 2 – Light Plan



7x 720W profile view box angle e.g. 20° with 10%

11-17x LED RGBW  
(Ch60-Ch62 small angle, others wide angle)

audience light (Channel 100):  
e.g. 4 x flood, 4 x Fresnel 1kW

video projector, position tbc depending on optics

LED ring, Neonflex material, 230V  
3 hanging points

light gels: 201, R119, profiles: violet, orange, pink, blue

Picture 1 - White Box Towers and LED Ring

