

FELDMESSUNG |

Performance für junges Publikum

SURVEYING |

production for young audience

ARPENTAGE |

Création jeune public



TECHNICAL READER | 02/2023

**Plus Ou Moins Cirque Productions,
Creation 2022.**

///

ARTISTIC & TECHNICAL DIRECTION:

Claire Terrien |
0049+17624331430 |
terreclaire@pomc-prod.de

PRODUCTION:

Frauke Niemann |
production@pomc-prod.de

Creation (Première): Mars 2022
young audience (3+), 45 min.

ON TOUR

Performance, stage, lights: Claire Terrien

Projections video, costumes, lights: Lena Gätjens

Music: Bianca Iannuzzi

Production: Frauke Niemann (option)

SET UP

- Set up (lights): 1/2 day, 2 technicians
- Set up (stage + video): 1/2 day, no technician
- Set up (music): 2 hours, 1 technician
- =TOTAL <1 day**

STAGE

- minimum height: 4m
- minimum dimension: 6 x 6 m, black dance carpet
- 8m distance between the video projector (on the floor) and the surface of projection (at the back)
- space must be dark

*special features / stage

- lines are drawn on the ground with a chalk line > chalk on the ground, cleanable
- a line made by a neon string is tighten through the space between the floor level and the hanging grid with a fishing line
- sand on the floor
- 2 scenes (approx. 5min) with smoke machine, if possible no/less ventilation.

chalk and sand on the floor



smoke scene 1 & 2



- - - STAGE / Bühne

- 1 video screen approx. 5 Meter wide x 3 Meter high (*we also have the possibility to bring one)
- 2 stage weights
- 2 x 220V AC power cable, 10m each

- - - LIGHTS / Licht

The light control is done from the stage, with a laptop and a controller (LANBOX) that we bring. **The dmx signal must arrive on the stage.**

Power

min. 12 graduated circuits 2kW.

Lights fixtures:

- 10 profilers, angle 45-50°, 750-1kW (min. 4)
- 2 PC 650W / 1KW
- 7 PC 1kW (minimum 4)
- 2 PC 2kw (option)
- neon UV (if dispoñible) or PAR led/deep blue

Filters:

L201 ; R#119 ;
black aluminium gaffer, blackfoil.

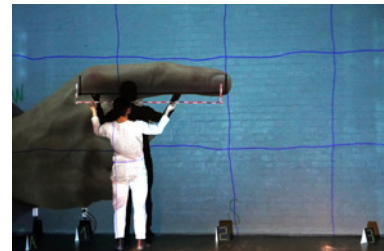
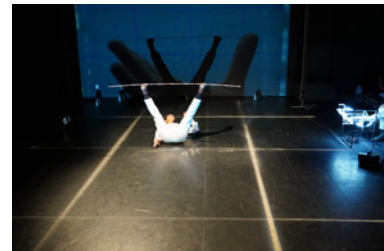
- - - VIDEO

We bring 1 video beamer, that will be placed front stage, projecting to the back wall. The video person is on stage, so we need 1x HDMI (5-15m) between video beamer and stage.

- 1 x 240V AC power cable + 1 multi plug (5 outlets)

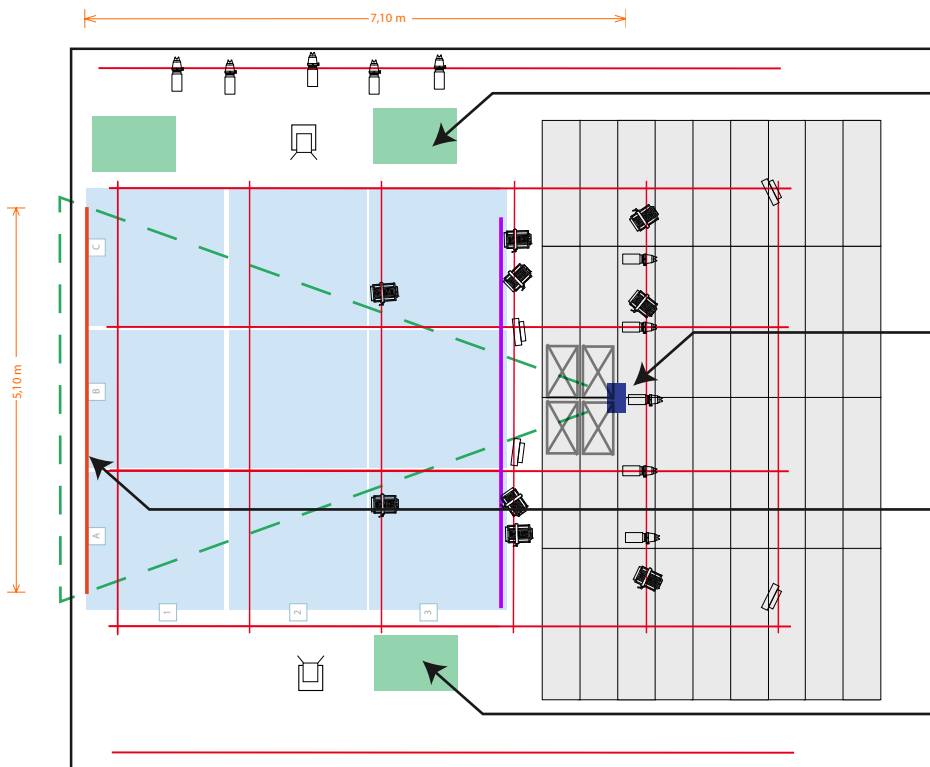
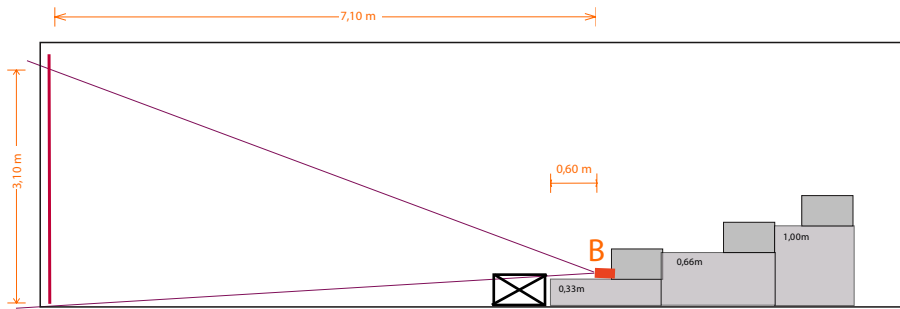
- - - SOUND

- General control at the technic pool
- 1x 6-channel mixer on stage,
- 1x 240v power supply +- 1 multi plug (5 outlets)
- Diffusion on stage: 2 speakers hanging or on stand from the back
- 1 DI box for the musician, 1 DI box for the video station
- 3 Microphones
- 3 microphone stands, one little (<50cm)
- XLR cables



*This list can be modified, depending on the stage conditions.
We can also adapt to smaller space or specific stage situations.*

video projection:
 - approx. 5 x H3 meters
 - distance min. 7 meters








position musician:
 - 1x sound mixer (4 channels)
 - 4x plugs 220V
 - 1x micro
 - 3x XLR > micros
 - 2 x XLR > sound system

video projector:
 - 1x plug 220V


projection:
 - approx. 5 x H3 meters
 - screen or white surface

position video:
 - 1x HDMI > video projector
 - 4x plugs 220V
 - 1 x Micro

LIGHTS:

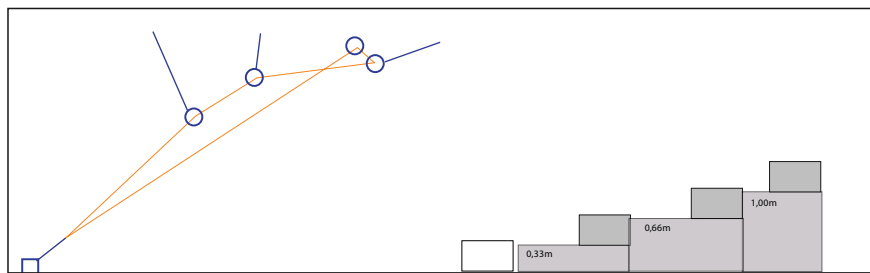
-  10x Profiler ----- ch 1-10
(big angle, f.e. ETC 25-50°)
-  9x 1kW PC ----- ch 11-19
(5 with barndoors)
-  2x 650W PC + 2x stands ----- ch 20
(on the floor with barndoors)
-  4 x LEDs PAR RGBWA-UV (Typ Cameo)
-  5Meter LED on a roll + 240V + on/off
(can be attached to some long wood piece)

 Projection Video

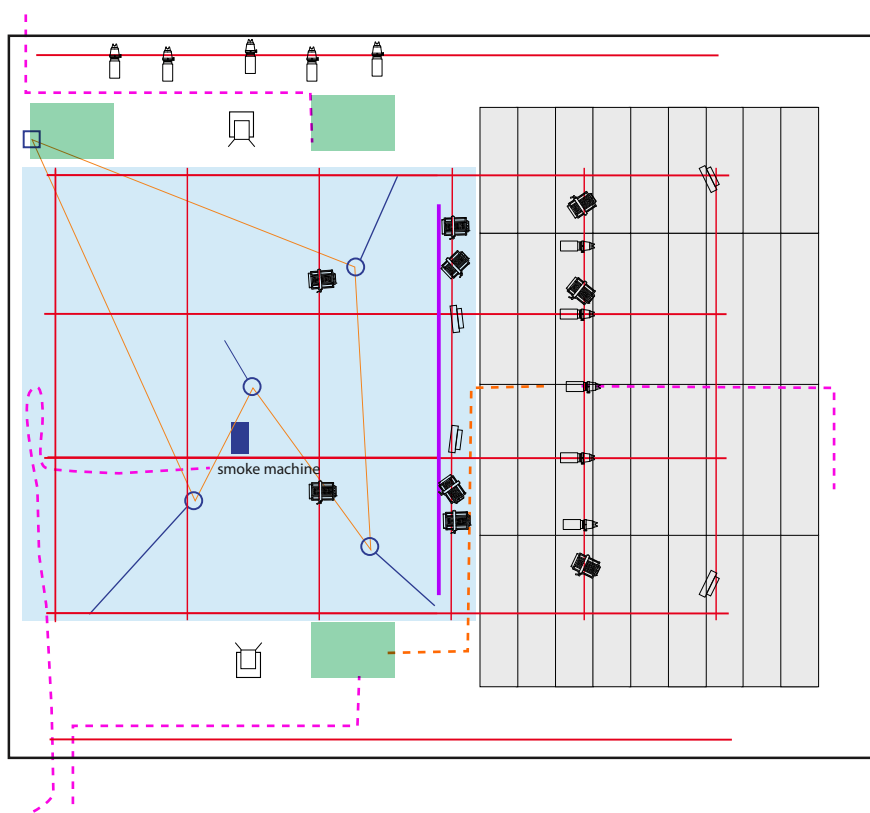
 Eventually block off some seats

/// STAGE PLAN // FELDMESSUNG / DATE: 02/2023

Contact Technic: Claire Terrien / terreclaire@pomc-prod.de / 0049+17624331430



0 1 2 5 meters



- play area approx. 6x6m
> black floor or black dance carpet
- Positions performers "Stations"
- 4 x cables 220V DC Power (length: 10-15M) for smoke machine, video table, video projector, sound station.
- HDMI Cable
- neon string neon
- weights
- hanging points for neon string